

# Standard Twin

D5

83 Wuhu St,  
Hung Hom,  
Kowloon



**HKD 6,400 +**  
per person per month  
12-month contract

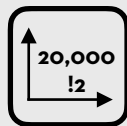
A stylish and homey accommodation built for two with an ensuite bathroom and an area of around 170sq!. High-speed WiFi and a dedicated study desk ensures productivity, while ample storage can help you keep tidy and organised. Keycard access and air-conditioning allows you to take control of the room.



Largest student community of around 600 students



5 min walk to Ho Man Tin and Whampoa MTR



20,000 !2 of communal space



15 min walk to PolyU and 20 min walk to HKMU



Newly renovated with ergonomic design and high-quality furniture



24/7 security guard and CCTV in public areas

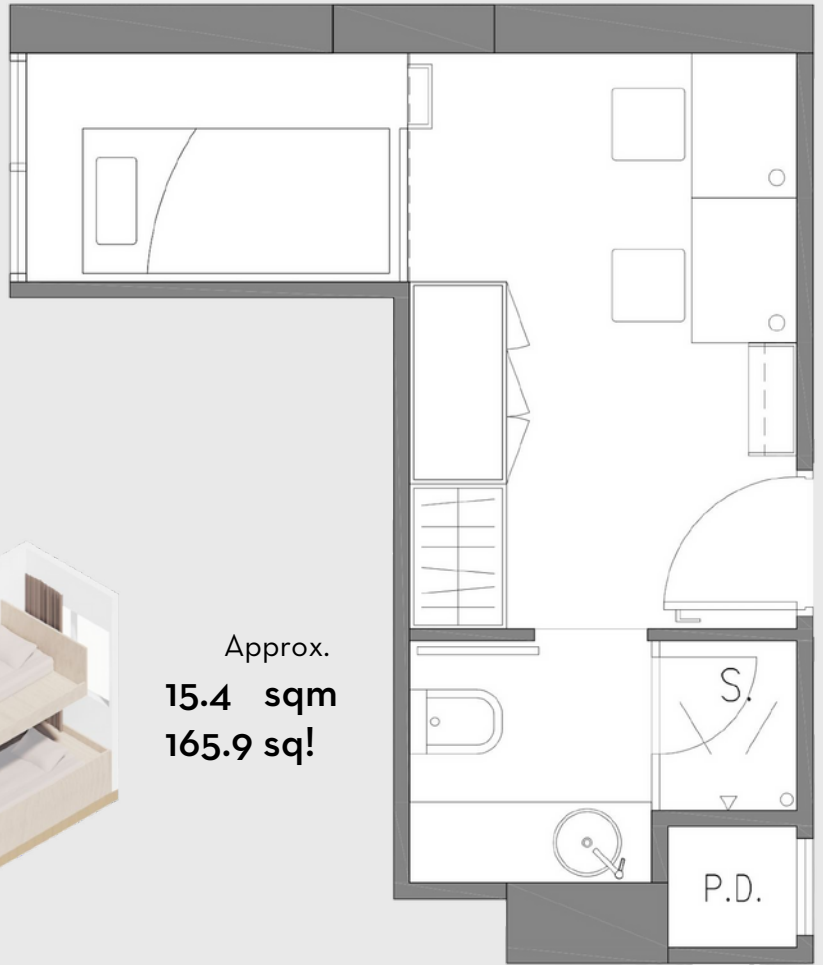
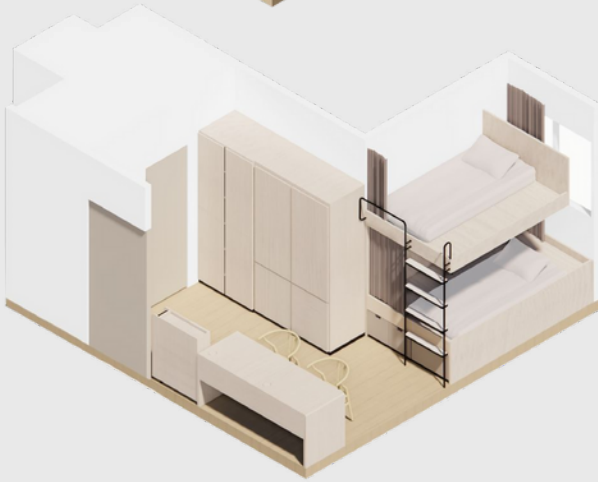
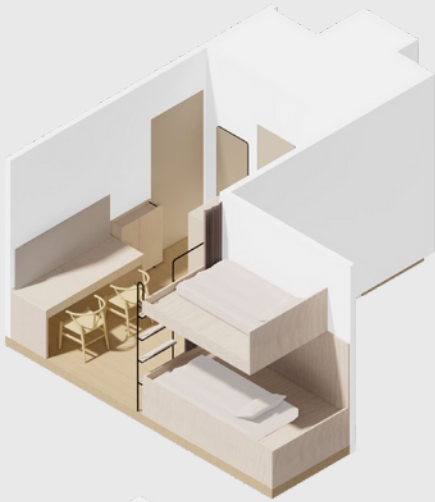


One-of-a-kind student-only accommodation in Hong Kong



Dedicated team to enhance the community and foster collaboration

# Room Layout



Approx.  
**15.4 sqm**  
**165.9 sq!**

## Room Amenities



High-speed WiFi



Cupboards and Storage



Ensuite Bathroom



Keycard Access



Desk and Chair



Air Conditioning



Unrestricted Access to Common Areas



Access to Shared Kitchen / Pantry

## Contact Us

Telephone: 5442 6939

WhatsApp: 5442 6939

WeChat: ydotxinfo

Email: [leasing.y83@ydotx.com](mailto:leasing.y83@ydotx.com)

Visit our website at

[www.ydotx.com](http://www.ydotx.com)

