

Standard Twin

D6

83 Wuhu St,
Hung Hom,
Kowloon



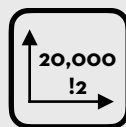
HKD 6,600 +
per person per month
12-month contract



Largest student
community of
around 600
students



5 min walk to Ho
Man Tin and
Whampoa MTR



20,000 !2 of
communal space



15 min walk to PolyU
and 20 min walk to
HKMU

A stylish and homey accommodation built for two with an ensuite bathroom and an area of around 180sq!. High-speed WiFi and a dedicated study desk ensures productivity, while ample storage can help you keep tidy and organised. Keycard access and air-conditioning allows you to take control of the room.



Newly renovated
with ergonomic
design and high-
quality furniture



24/7 security guard
and CCTV in public
areas

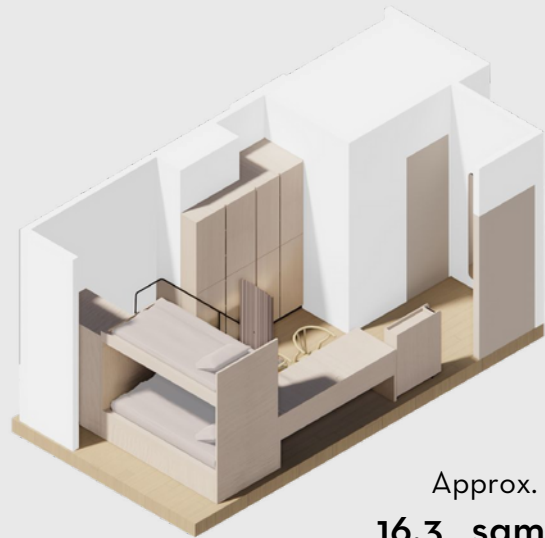
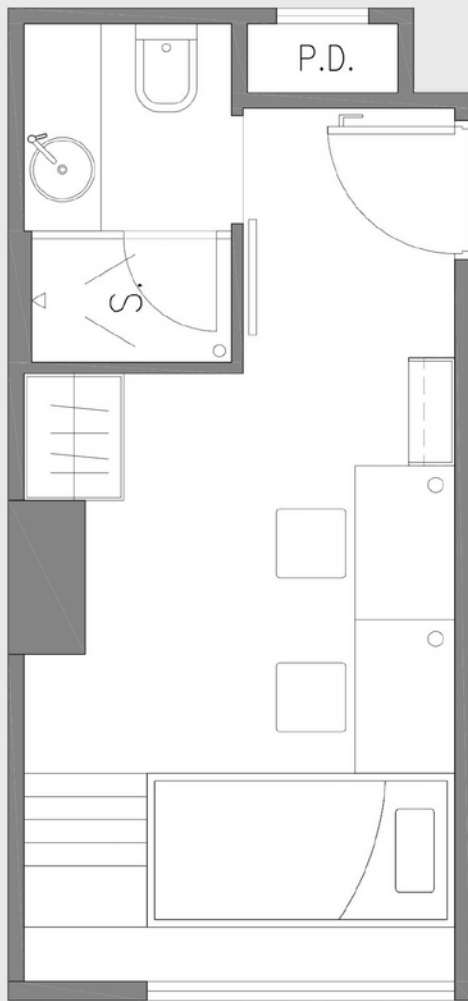


One-of-a-kind
student-only
accommodation in
Hong Kong

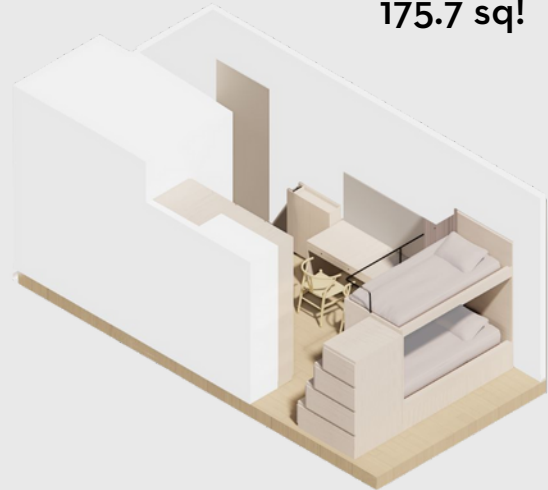


Dedicated team to
enhance the
community and
foster collaboration

Room Layout



Approx.
16.3 sqm
175.7 sq!



Room Amenities



High-speed WiFi



Cupboards and Storage



Ensuite Bathroom



Keycard Access



Desk and Chair



Air Conditioning



Unrestricted Access to Common Areas



Access to Shared Kitchen / Pantry

Contact Us

Telephone: 5442 6939

WhatsApp: 5442 6939

WeChat: ydotxinfo

Email: leasing.y83@ydotx.com

Visit our website at

www.ydotx.com

