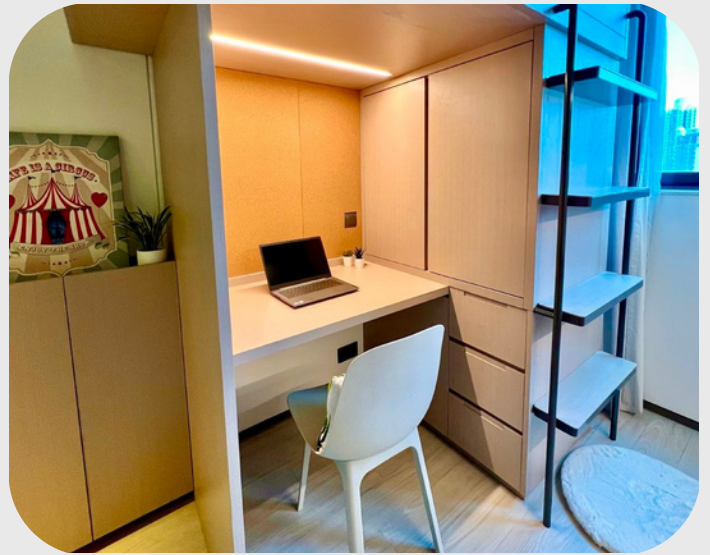


# Standard Twin

D2

83 Wuhu St,  
Hung Hom,  
Kowloon



**HKD 7,300+**  
per person per month  
12-month contract



Largest student  
community of  
around 600  
students



5 min walk to Ho  
Man Tin and  
Whampoa MTR



20,000 sqft of  
communal  
space



15 min walk to PolyU  
and 20 min walk to  
HKMU

**A stylish and homey accommodation built for two with an ensuite bathroom and an area of around 160sqft. High-speed WiFi and a dedicated study desk ensures productivity, while ample storage can help you keep tidy and organised. Keycard access and air-conditioning allows you to take control of the room.**



Newly renovated  
with ergonomic  
design and high-  
quality furniture



24/7 security guard  
and CCTV in public  
areas

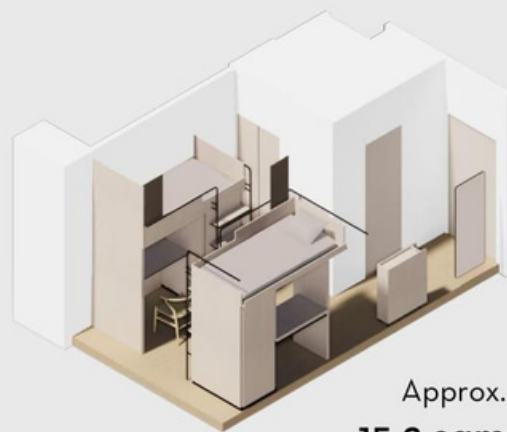
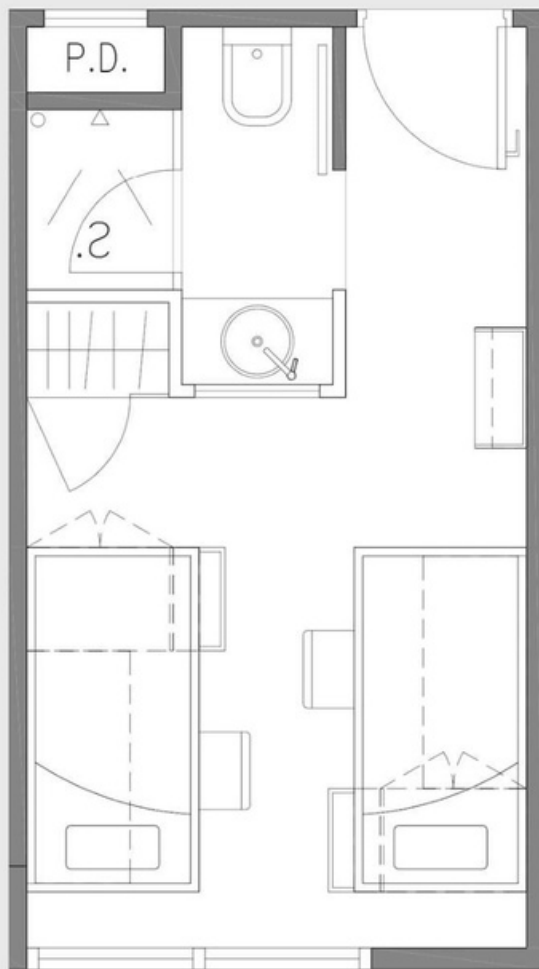


One-of-a-kind  
student-only  
accommodation in  
Hong Kong

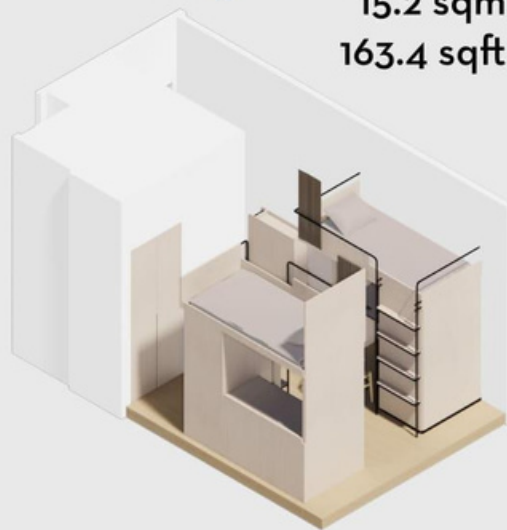


Dedicated team to  
enhance the  
community and  
foster collaboration

# Room Layout



Approx.  
**15.2 sqm**  
**163.4 sqft**



## Room Amenities



High-speed WiFi



Cupboards and  
Storage



Ensuite  
Bathroom



Keycard Access



Desk and Chair



Air Conditioning



Unrestricted  
Access to  
Common Areas



Access to Shared  
Kitchen / Pantry

## Contact Us

Telephone: 5442 6939  
WhatsApp: 5442 6939  
WeChat: ydotxinfo  
Email: [leasing.y83@ydotx.com](mailto:leasing.y83@ydotx.com)

Visit our website at  
[www.ydotx.com](http://www.ydotx.com)



All images are purely illustrative and exhibitive of features at Y83