

# Standard Twin

D6

83 Wuhu St,  
Hung Hom,  
Kowloon



**HKD 7,200 +**  
per person per month  
12-month contract



Largest student  
community of  
around 600  
students



5 min walk to Ho  
Man Tin and  
Whampoa MTR



20,000 sqft of  
communal  
space



15 min walk to PolyU  
and 20 min walk to  
HKMU



Newly renovated  
with ergonomic  
design and high-  
quality furniture



24/7 security guard  
and CCTV in public  
areas



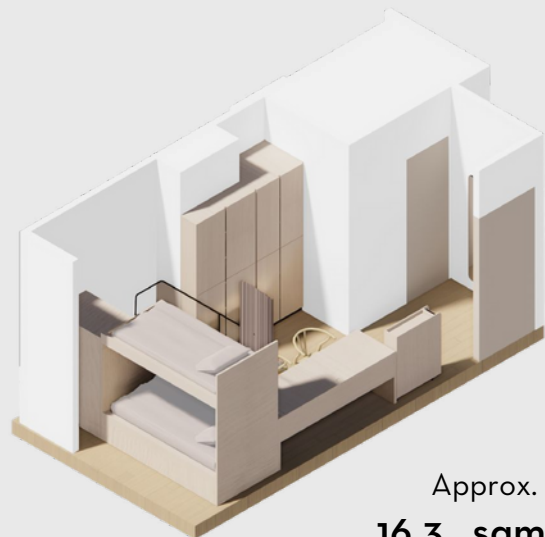
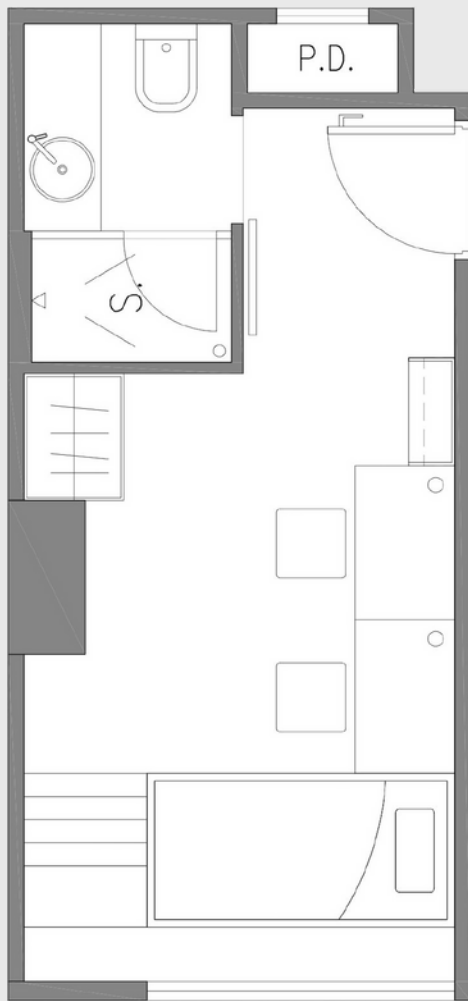
One-of-a-kind  
student-only  
accommodation in  
Hong Kong



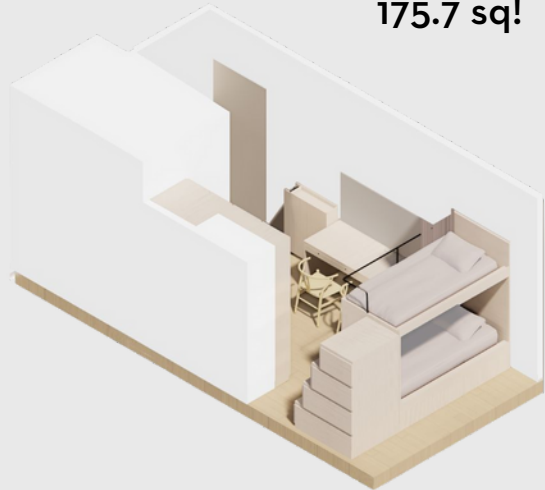
Dedicated team to  
enhance the  
community and  
foster collaboration

A stylish and homey accommodation built for two with an ensuite bathroom and an area of around 180sqft. High-speed WiFi and a dedicated study desk ensures productivity, while ample storage can help you keep tidy and organised. Keycard access and air-conditioning allows you to take control of the room.

# Room Layout



Approx.  
**16.3 sqm**  
**175.7 sq!**



## Room Amenities



High-speed WiFi



Cupboards and  
Storage



Ensuite  
Bathroom



Keycard Access



Desk and Chair



Air Conditioning



Unrestricted  
Access to  
Common Areas



Access to Shared  
Kitchen / Pantry

## Contact Us

Telephone: 5442 6939

WhatsApp: 5442 6939

WeChat: ydotxinfo

Email: [leasing.y83@ydotx.com](mailto:leasing.y83@ydotx.com)

Visit our website at

[www.ydotx.com](http://www.ydotx.com)

