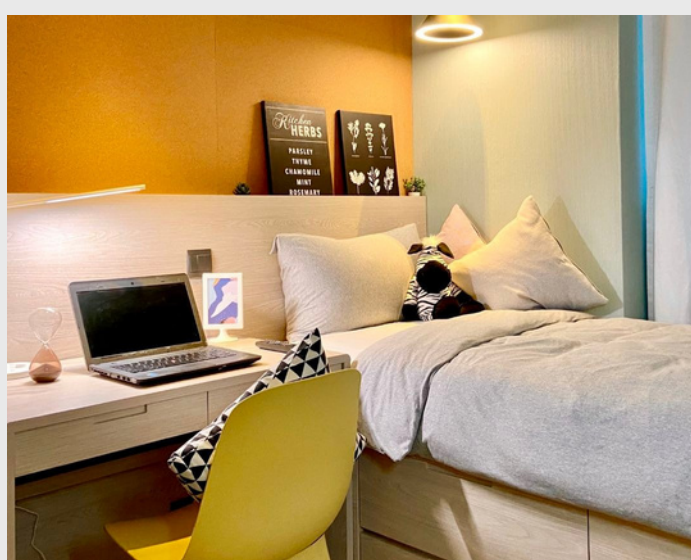
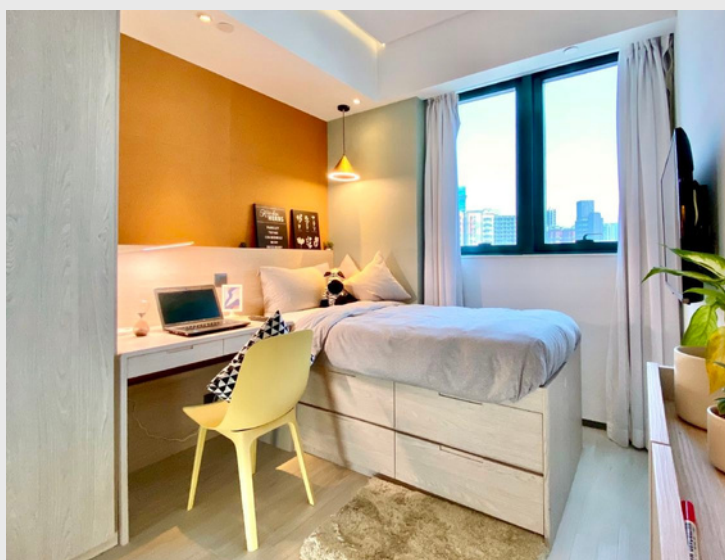


Standard Single

S1

83 Wuhu St,
Hung Hom,
Kowloon



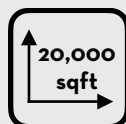
HKD 14,000 +
per person per month
12-month contract



Largest student
community of
around 600
students



5 min walk to Ho
Man Tin and
Whampoa MTR



20,000 sqft of
communal
space



15 min walk to PolyU
and 20 min walk to
HKMU



Newly renovated
with ergonomic
design and high-
quality furniture



24/7 security guard
and CCTV in public
areas



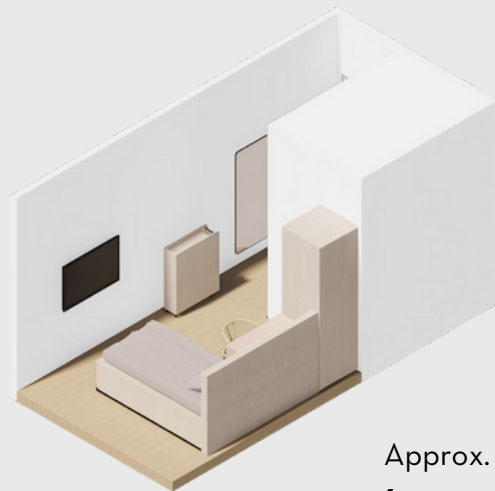
One-of-a-kind
student-only
accommodation in
Hong Kong



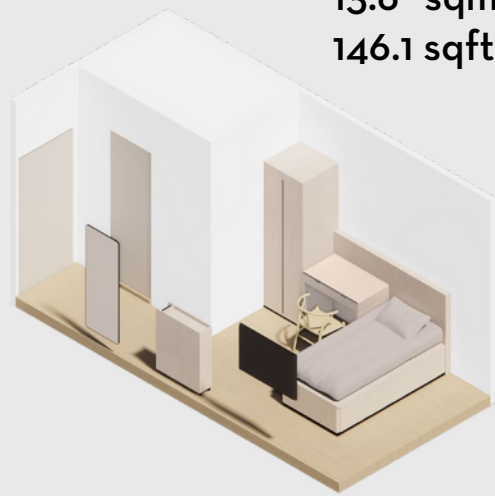
Dedicated team to
enhance the
community and
foster collaboration

A stylish and homey accommodation built for one with an ensuite bathroom and an area of around 150sqft. High-speed WiFi and a dedicated study desk ensures productivity, while ample storage can help you keep tidy and organised. Keycard access and air-conditioning allows you to take control of the room.

Room Layout



Approx.
13.6 sqm
146.1 sqft



Room Amenities



High-speed WiFi



Cupboards and
Storage



Ensuite
Bathroom



Keycard Access



Desk and Chair



Air Conditioning



Unrestricted
Access to
Common Areas



Access to Shared
Kitchen / Pantry

Contact Us

Telephone: 5442 6939

WhatsApp: 5442 6939

WeChat: ydotxinfo

Email: leasing.y83@ydotx.com

Visit our website at

www.ydotx.com

