

Standard Twin

D6

83 Wuhu St,
Hung Hom,
Kowloon



**Price to be
announced later**

A stylish and homey accommodation built for two with an ensuite bathroom and an area of around 180sqft. High-speed WiFi and a dedicated study desk ensures productivity, while ample storage can help you keep tidy and organised. Keycard access and air-conditioning allows you to take control of the room.



Largest student community of around 600 students



5 min walk to Ho Man Tin and Whampoa MTR



20,000 sqft of communal space



15 min walk to PolyU and 20 min walk to HKMU



Newly renovated with ergonomic design and high-quality furniture



24/7 security guard and CCTV in public areas

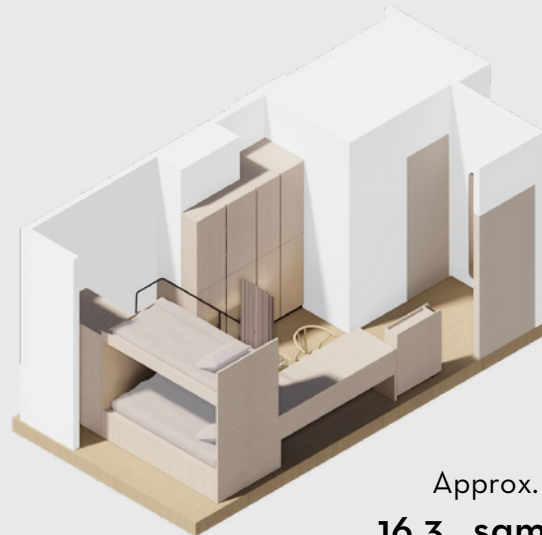
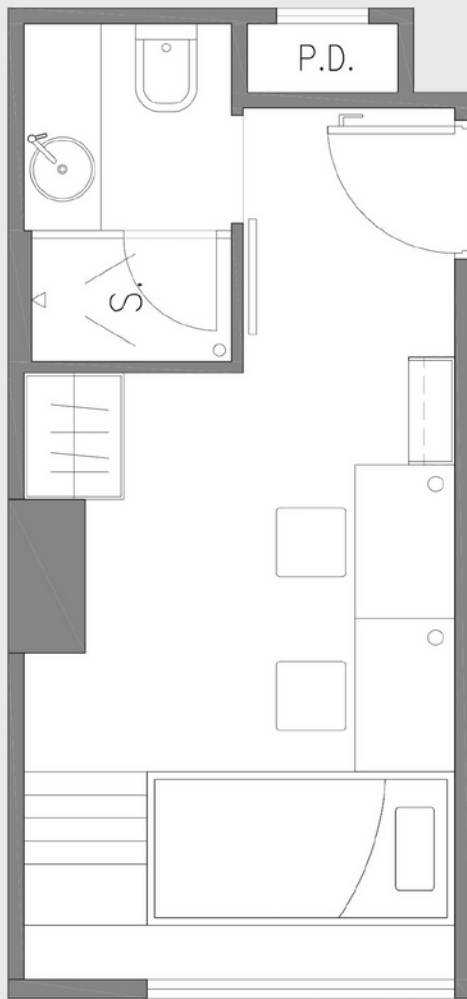


One-of-a-kind student-only accommodation in Hong Kong

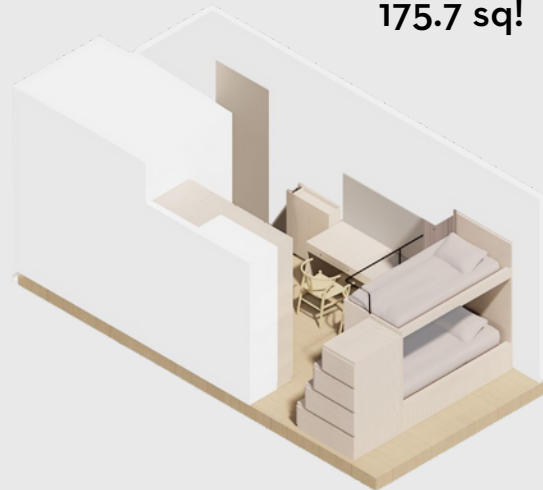


Dedicated team to enhance the community and foster collaboration

Room Layout



Approx.
16.3 sqm
175.7 sq!



Room Amenities



High-speed WiFi



Cupboards and Storage



Ensuite Bathroom



Keycard Access



Desk and Chair



Air Conditioning



Unrestricted Access to Common Areas



Access to Shared Kitchen / Pantry

Contact Us

Telephone: 5442 6939

WhatsApp: 5442 6939

WeChat: ydotxinfo

Email: leasing.y83@ydotx.com

Visit our website at

www.ydotx.com

