



# Single Room

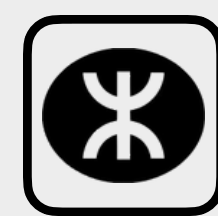
160 - 166 s.f 14.9 - 15.4 s.m



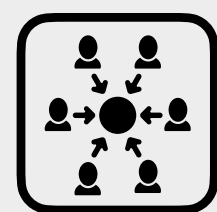
A stylish and homey accommodation built for one with an ensuite bathroom and an area of 160-166 sf. Free Wi-Fi and a dedicated study desk ensures productivity, while ample storage can help you keep tidy and organised. Keycard access and air-conditioning allows you to take control of the room.



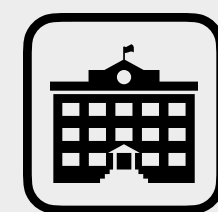
Operated by HK's largest student accommodation operator



6 and 8 mins walk to To Kwa Wan and Ho Man Tin MTR



Diverse common space with various activities



10 mins to PolyU and HKMU by bus / mini bus



Newly renovated with ergonomic design and high-quality furniture



24/7 security guard and CCTV in public areas



Student and young professional-only accommodation in HK

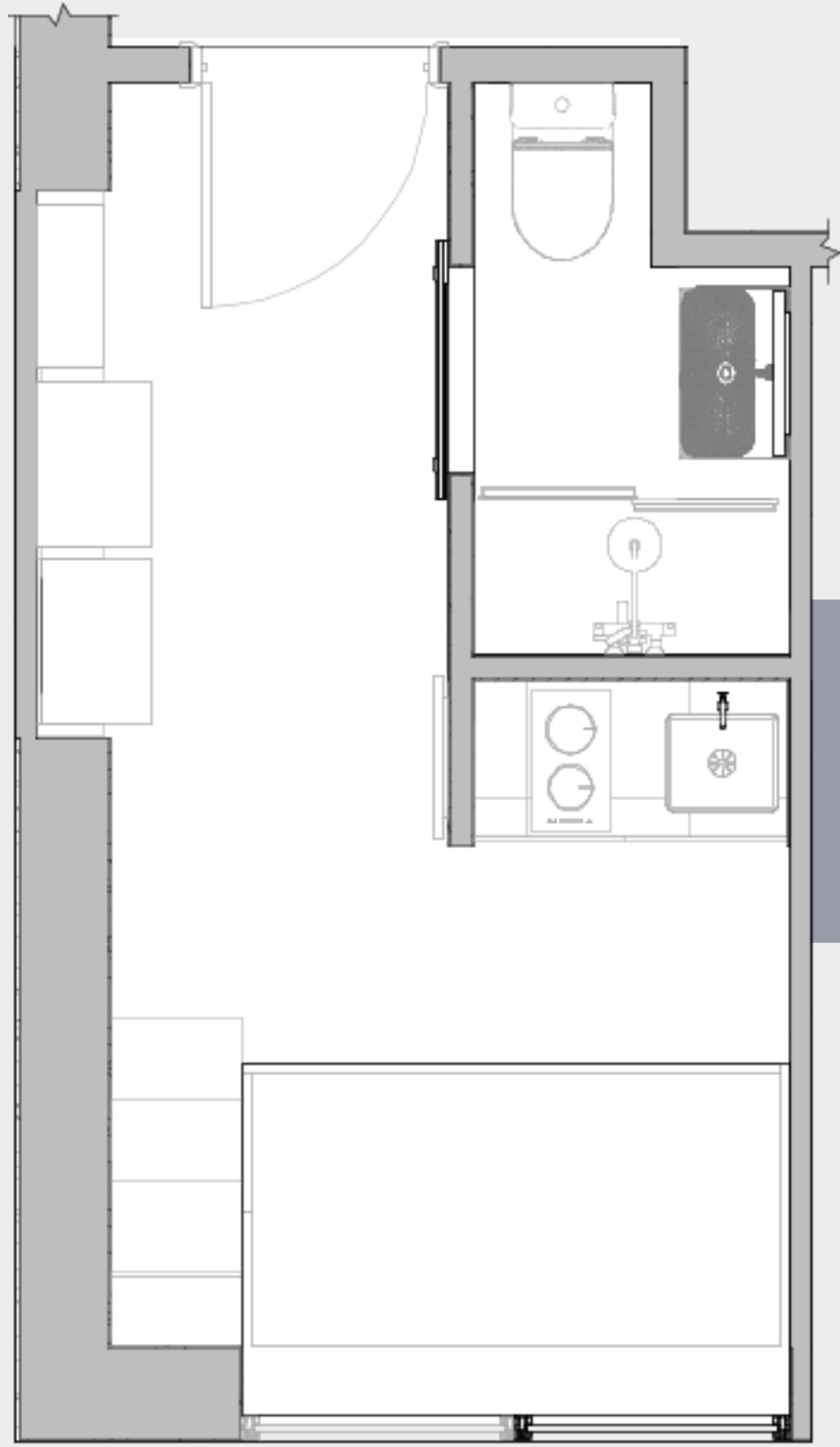


Dedicated team to enhance the community and foster collaboration

All images are illustrative and exhibit of the features of Y36



# Single Room Floor Plan and 3D view



360°




## Room Facilities

## Contact Us

  
Bed with  
1.9 x 1m mattress

  
Desk & Chair

  
Air-conditioning

  
Open Kitchen

  
Ensuite Bathroom

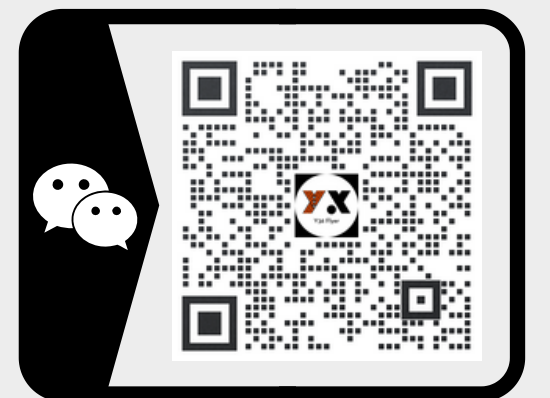
  
Open windows for  
air circulation

  
Keycard access

  
Wardrobe &  
Storage

  
Free Wi-Fi

 +852 5442 6939  
 3 San Lau Street,  
Hung Hom  
 [www.ydotx.com](http://www.ydotx.com)



### Remarks:

1. The area shown in this unit is the saleable area.
2. The properties in this marketing material are completed properties.
3. All images, photographs or drawings shown in this material are indicative only. They are not drawn to scale and/or may have been edited and processed with computerized imaging techniques. The images provided in this material are intended as a guide and could be subject to change.

